

**e z t r a d e**

INVESTMENT PLATFORM FOR YOUR PEACE OF MIND

## **Ez Technical Analysis**

Traders understand that probability is a major factor in trading. Probability is the method upon which traders gain competitive advantage over other traders.

By relying on in-depth analysis and probability calculations, traders are continuously finding that they are more profitable in their trading. Therefore, EzTrade has introduced a new approach within Ez Technical Analysis.



## **Paralysis of analysis is likely to occur when investing or trading without the right tools.**

Human nature is to use probability to determine tolerance levels for decision making. We shape our daily experiences by calculating probability of a certain outcome occurring in our favor. Our experiences are subconsciously created from our brain weighing the options.

In market trading, traders are always forced to make a decision to either enter a new trade or exit an existing one.

**Trading based on your personal risk management criterion is critical to overall, long-run profitability.**

Probability and tolerance levels are key elements in defining our behavior. Now, wouldn't it be nice to have an application that provides you with a probability value that enables you to make the "right-for-you" decision?

**EzTrade offers platforms that allows our traders to receive comprehensive probability analysis and make trade decisions based on a calculated risk assessment using each individual trader's criterion.**



**Traders now rely less on the commonly used “one-size-fits-all” analysis method, and rely on our new Historical and Stress Test Probability after seeing the advantages.**

1

**HISTORICAL  
PROBABILITY**

Takes into consideration  
direction of the underlying  
moves

Reflects the specificity of  
each underlying historical  
behavior

2

**STRESS TEST  
PROBABILITY**

Utilizes magnitude of the  
historical movements, as to  
represent capability of the  
underlying to perform  
certain moves without  
taking into consideration  
direction of that move



# 2

## We've introduced two new probabilities and a new method for calculating probability.

With **Ez Technical Analysis**, we have applied the new **Historical and Stress Test Probabilities** as well as different interpretation of technical trend analysis.

Our new methodology converts trend analysis indicators into functional probability values that leads to a simple rating system. Our traders improve their risk management capabilities with our rating system.

All Data as of Closing: Friday, 05/19/17

Reports: Portfolio Capital Appreciation, Overbought, Oversold, Setup Portfolio, Portfolio Capital Appreciation

Symbol:  Search

Click on Column Header to Sort

Symbol	Price	Stock Rate	Option Sentiment	Sector Name	Industry Rank	Overall Rate
AAPL	153.06	3	2	Technology	4	3
ABBV	65.58	3	2	Health Care	1	1
ABT	43.16	4	3	Health Care	2	3
AEE	55.60	4	3	Public Utilities	4	4
AMGN	156.51	4	3	Health Care	2	1
AXP	76.80	4	2	Finance	3	3
BA	180.76	4	1	Capital Goods	1	1
BABA	123.22	3	1	Miscellaneous	5	3
BAC	23.05	4	3	Finance	3	4
BIDU	188.76	3	2	Technology	3	3
BIP	39.61	4	3	Consumer Services	4	4
BMJ	54.02	4	2	Health Care	2	1
BP	36.94	2	2	Energy	5	1
BX	29.87	3	3	Finance	3	3

Additionally, two daily reports based on our rating system are generated for Overbought and Oversold stocks.

In **Ez Stock Analysis** report, traders can create and follow their own portfolios and analyze individual stocks.



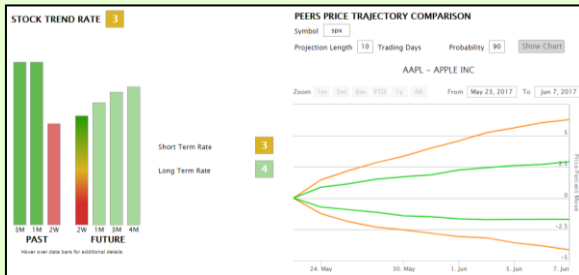


**Traders can perform a deep dive into individual stocks by searching or selecting the symbol in the Ez Stock Analysis report.**

Our report, **Ez Stock Analysis**, has four sections:

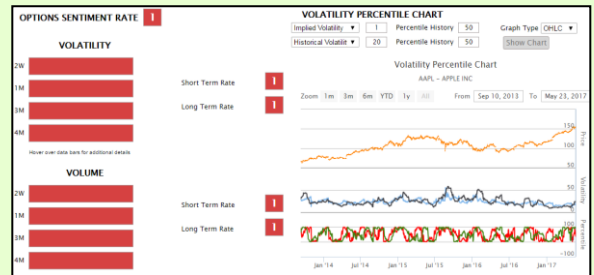
1

2



## STOCK TREND ANALYSIS

Provides rating of the past behavior and future predictions



## OPTIONS SENTIMENT

Provides thorough implied volatility and volume analysis for options market participants to view the future stock behavior



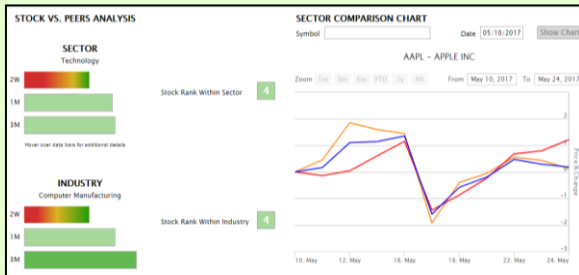


# Traders can perform a deep dive into individual stocks by searching or selecting the symbol in the Ez Stock Analysis report.

Our report, **Ez Stock Analysis**, has four sections:

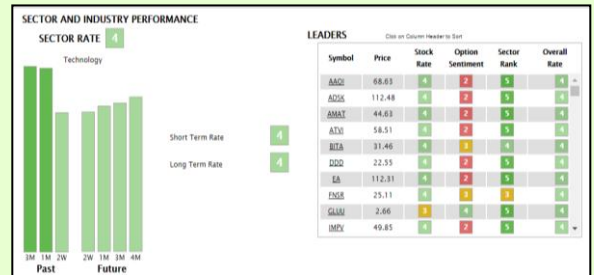
3

4



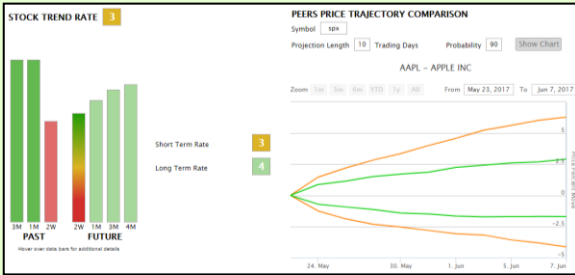
## STOCK VS. PEER ANALYSIS

Provides ability to compare stock historical movements to its peers



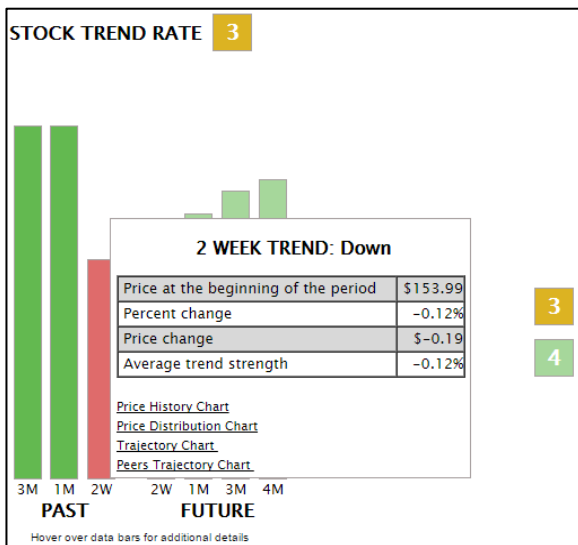
## SECTOR AND INDUSTRY ANALYSIS

Provides industry and sector ratings as well as rating of the stocks within these groups

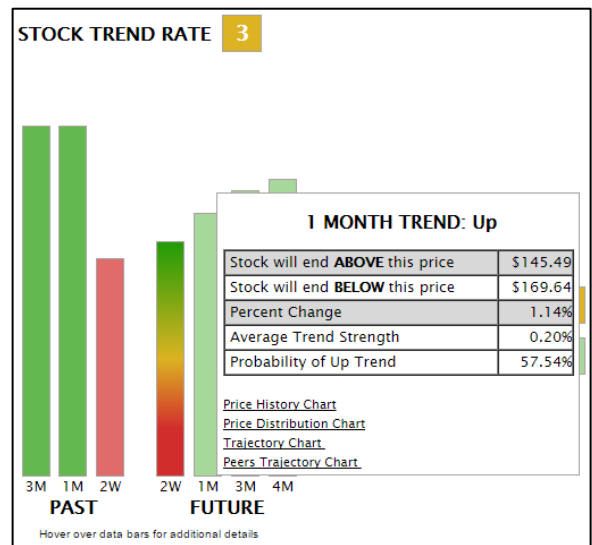


## SECTION 1 STOCK TREND ANALYSIS

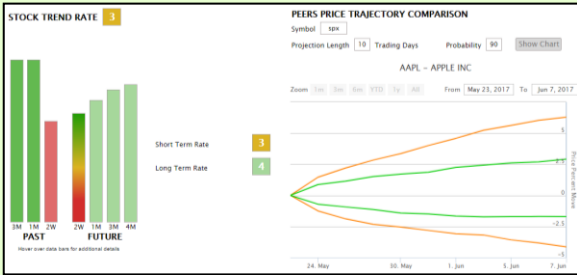
Our traders are continuously analyzing individual stocks to understand behavior trends over time. The drill down analytic capability and charting offered through **Ez Stock Analysis** report is unparalleled to any other platform.



Additional information regarding strength of trend is found in **Past section** when hovering over the various time periods, along with graphs



With 90% probability, an Upper and Low price band is predicted in **Future section**, along with prediction of trend strength during that period of time

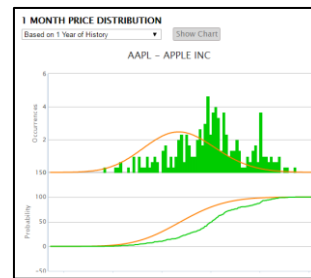


## SECTION 1 STOCK TREND ANALYSIS

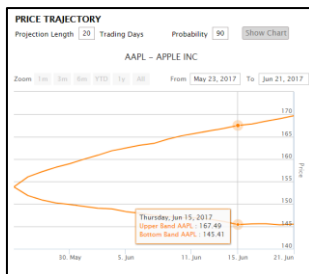
Visualizing your results in charts is a default offering within **Ez Stock Analysis**. Correlated charts instantly change as our traders change parameters and drill into the stock.



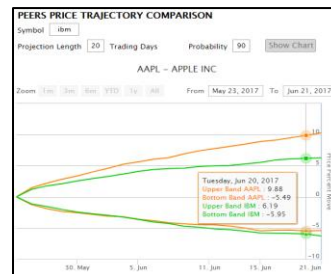
### EARNINGS PRICE HISTORY



### 1 MONTH PRICE DISTRIBUTION



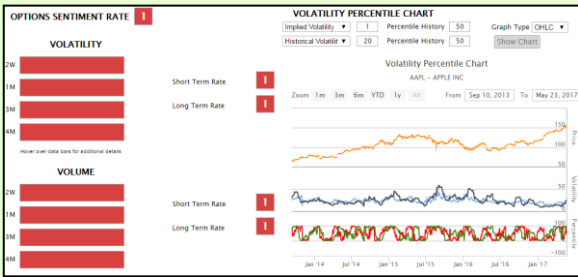
### PRICE TRAJECTORY



### PEERS PRICE TRAJECTORY COMPARISON



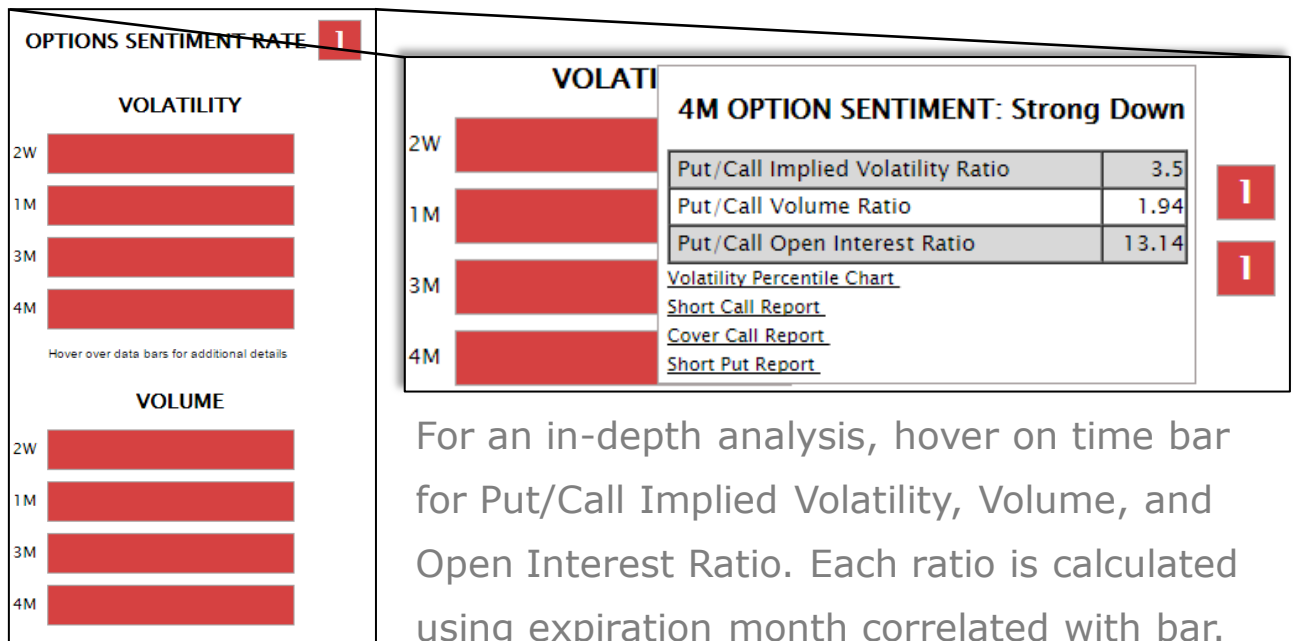




## SECTION 2

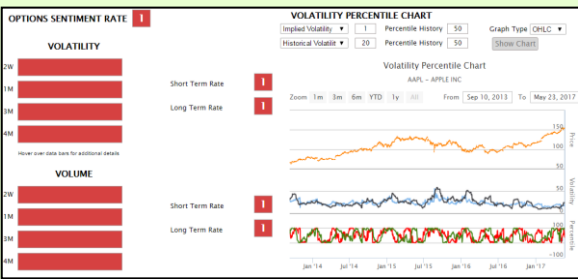
# OPTIONS SENTIMENT

Incorporating options volatility and volume analysis into **Ez Technical Analysis** allowed our traders to wear binoculars as they assess stocks with a view of **Options Sentiment**.



With an options market view on future behavior, our traders benefit from having a comprehensive understanding on possible future movements of underlying asset.





## SECTION 2 OPTIONS SENTIMENT

Option traders obtain complete analysis on three strategies:

- 1 Short Call
- 2 Covered Call
- 3 Short Put

Exp Month	Strike Price	Bid	Ask	Annual Yield	Probability	Overall Rate
2017-06-16	157.50	0.96	0.99	10.16	61.38	6.24
2017-06-16	160.00	0.51	0.53	5.29	71.06	3.76
2017-07-21	165.00	0.91	June 16 160.00 Call			
2017-08-18	165.00	2.00	Yield to Strike		0.33	
2017-08-18	170.00	1.19	Percent In/Out of the money		-4.16%	
2017-09-15	165.00	2.77	Delta		17	
2017-09-15	170.00	1.77	1.82	3.39	64.49	2.19

Hover over for in-depth analysis.

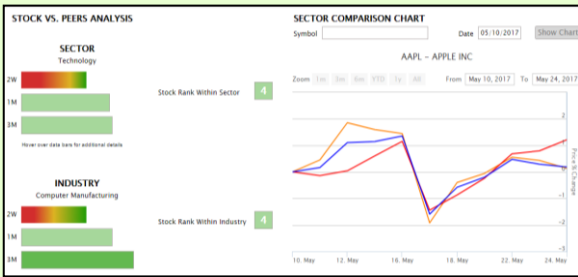
One of the most valuable and unique pieces of information is presented when hovered over Probability.

Exp Month	Strike Price	Bid	Ask	Annual Yield	Probability	Overall Rate		
2017-06-16	157.50	0.96	0.99	10.16	61.38	6.24		
2017-06-16	160.00	0.51	0.53	5.29	71.06	3.76		
2017-06-16	Probability of profit selling June 16 160.00 Call option							
2017-06-16	Theoretical	Short		Long		Technical Analysis		
2017-06-16		Hist	STest	Hist	STest	RSI	SO	PPO
2017-06-16	86.45	63.60	57.20	69.70	55.92	75.47	77.03	67.45

Report views probability analysis from a different perspective. It ranges from Theoretical Probability to Short and Long Historical, and Stress Test Probability.

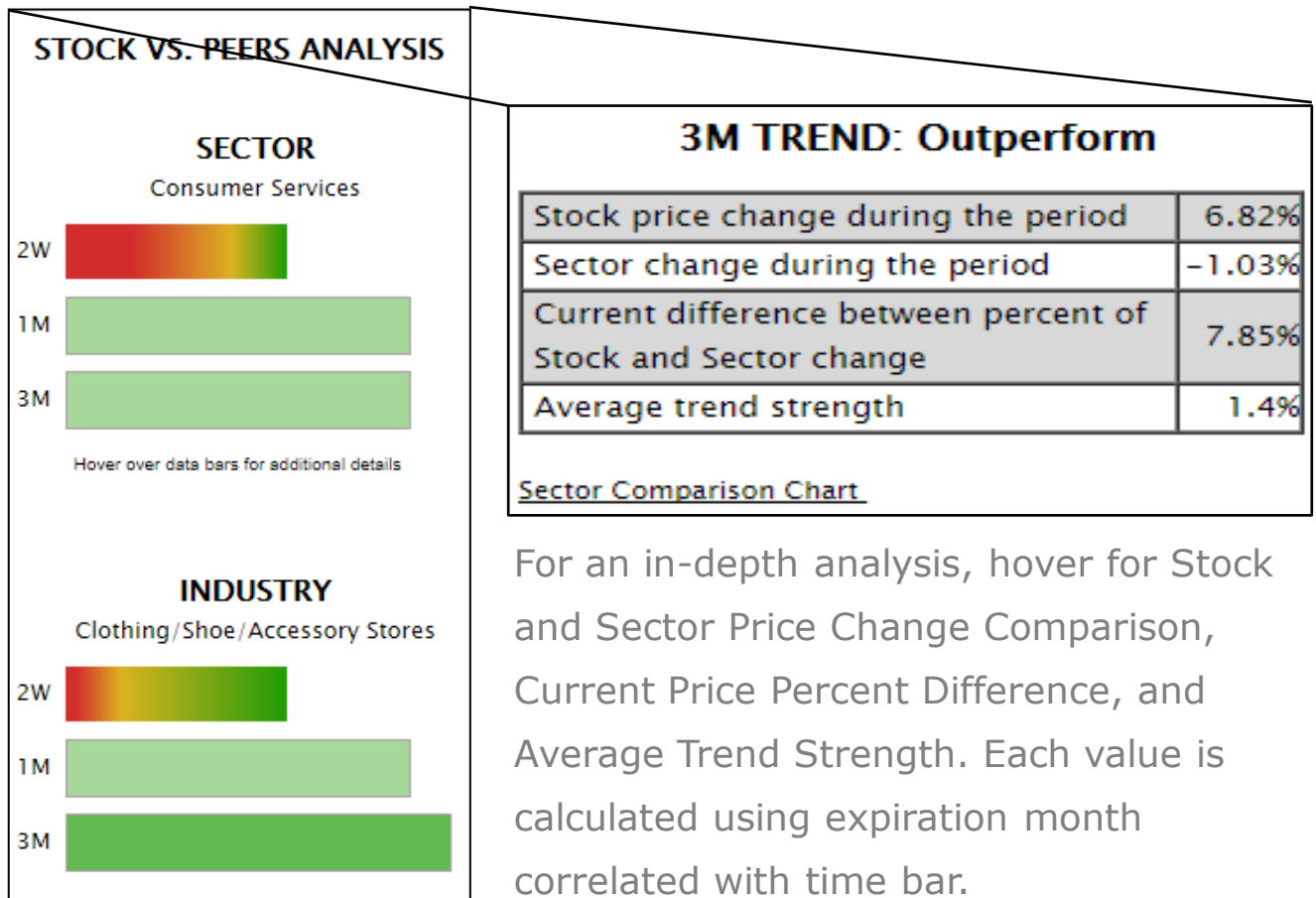
**Reminder:** Ez Technical Analysis converts trend following indicators (e.g. Relative Strength Indicator, and Stochastic and Percentage Price Oscillator) into probability values.

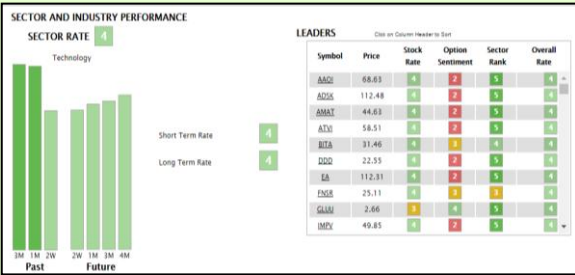




## SECTION 3 STOCK VS. PEER ANALYSIS

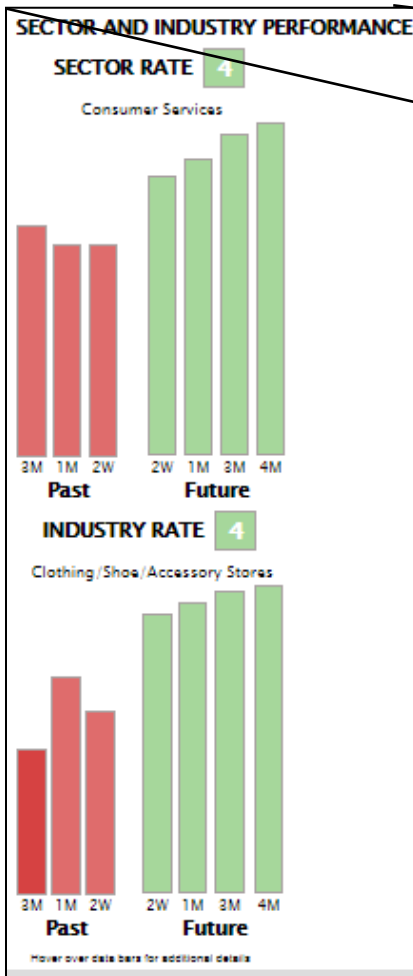
Traders appreciate being able to compare stock historical performance to the Sector and Industry performance, as well as to the selected individual stocks.





## SECTION 4 SECTOR AND INDUSTRY ANALYSIS

To analyze historical and predict future Sector and Industry performance, view the summary report. By clicking on an individual stock symbol, traders uncover full analysis report.



**4 MONTH TREND: Up**

Sector will end up <b>ABOVE</b> this level	89.74%
Sector end up <b>BELOW</b> this level	98.15%
Percent change	4.74%
Average trend strength	3.77%

For an in-depth analysis, hover on time bar to determine with 90% probability that Sector or Industry will not move above or below indicated percent level from the current price, the percent change, and the average trend strength. Each value is calculated using expiration month correlated with time bar.